

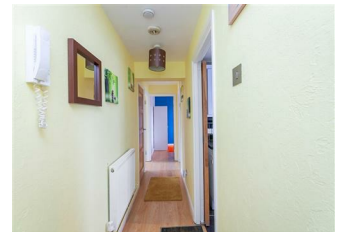


10d Rathcoole Drive, Newtownabbey, BT37 9AE

£650 Per Month



Immaculately presented, part furnished, two bedroom, top floor apartment, conveniently located within the popular Rathcoole area of Newtownabbey. The property comprises communal entrance hall, private entrance hall, lounge, modern fitted kitchen, two well proportioned bedrooms, and bathroom with white three piece suite. Externally the property benefits from communal gardens, access to external store, and communal parking area. Other attributes include gas fired central heating and PVC double glazing. Early viewing highly recommended.



INVESTORS IN PEOPLE
We invest in people Gold

PRS Property Redress Scheme

Proudly sponsoring



Awards



WE ARE MACMILLAN
CANCER SUPPORT